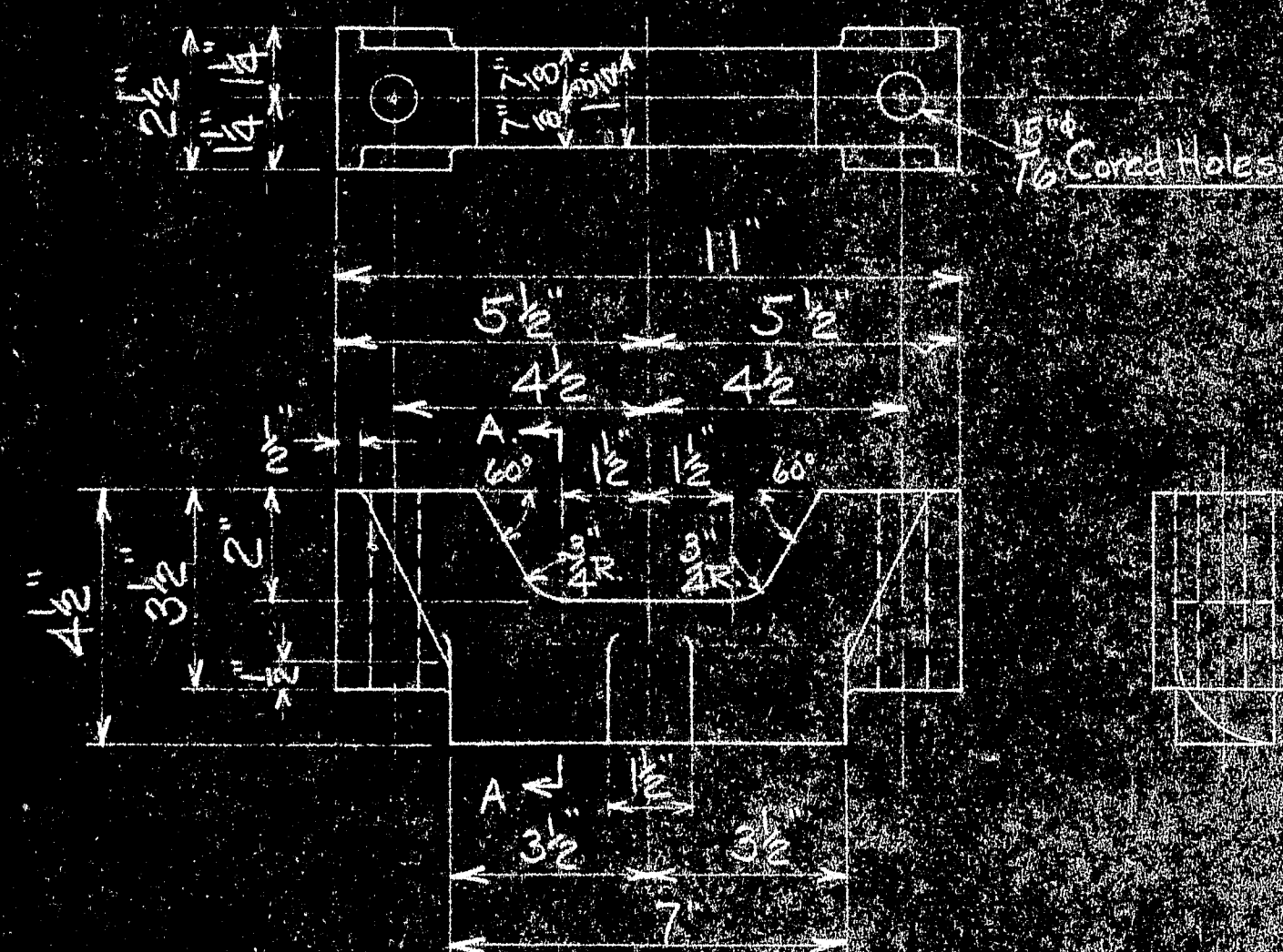
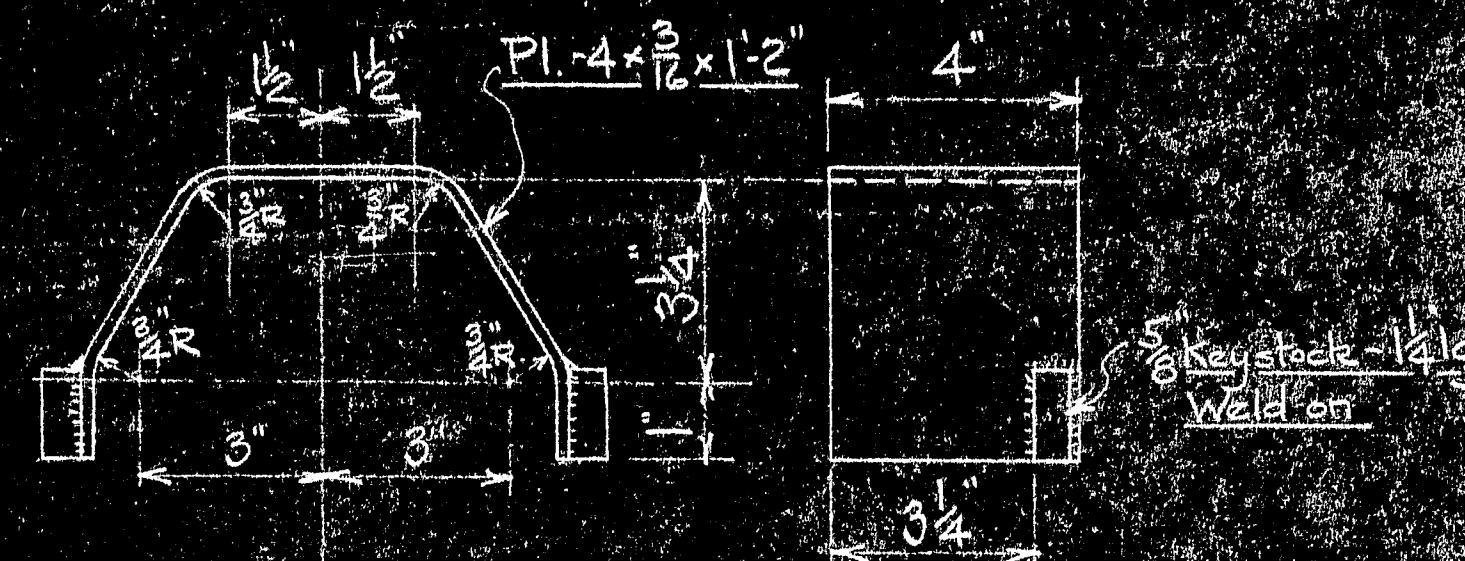
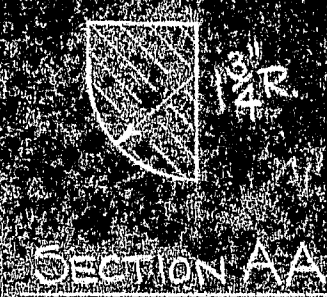


M32-16A - CLAMP HALF

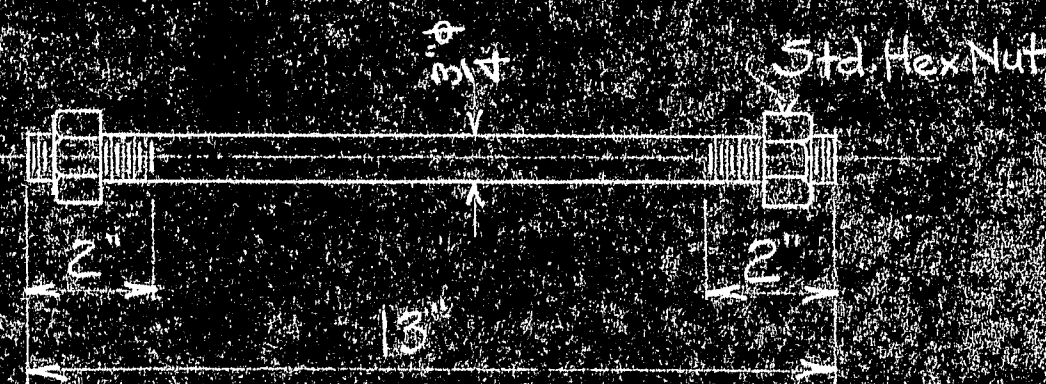
Make from Maple Block 1 3/4 x 5 1/2 x 11 1/2



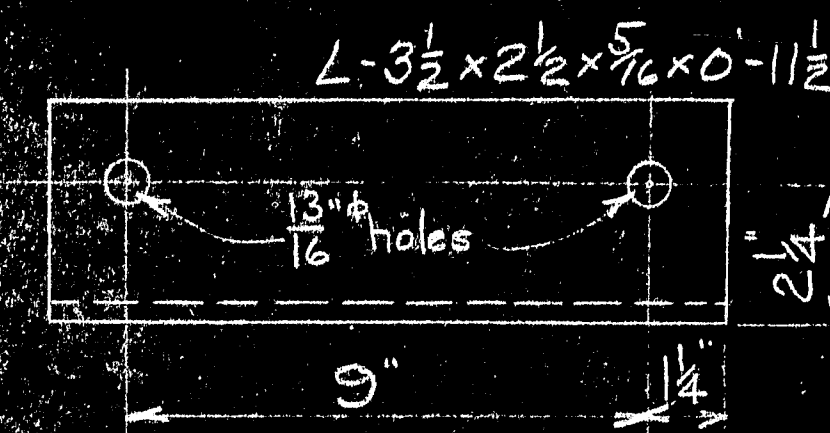
M32-16B CLAMP HALF



M32-16C - BENT PLATE



M32-16E - BAR BOLT



M32-16D - ANGLE

M32-16E	144	Steel	5311-13	Bar Bolt	
M32-16D	72	Steel	5310-13	Angle	
M32-16C	72	Steel	5310-13	Bent Plate	
M32-16B	72	C. I.	5314-13	Clamp Half	
M32-16A	72	Maple	5312-13-14	Clamp Half	

MARK	REQ'D	MAT'L	REQ. NO.	NAME	REMARKS
BILL OF MATERIAL					
JOHN A. ROEBLING'S SONS CO., TRENTON, N. J.					
DEER ISLE BRIDGE					
TEMPORARY STAYS					
CABLE BAND CONNECTION DETAILS					
BY	REVISIONS	DATE	SCALE 3" = 1'-0"	SERIAL	SHEET
CH. DR.	APPROVED		DES. CND 6-21-43	M32	16
ENG'R			TR.		
			CH.		

